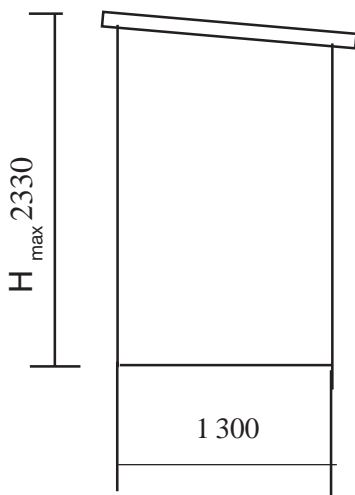
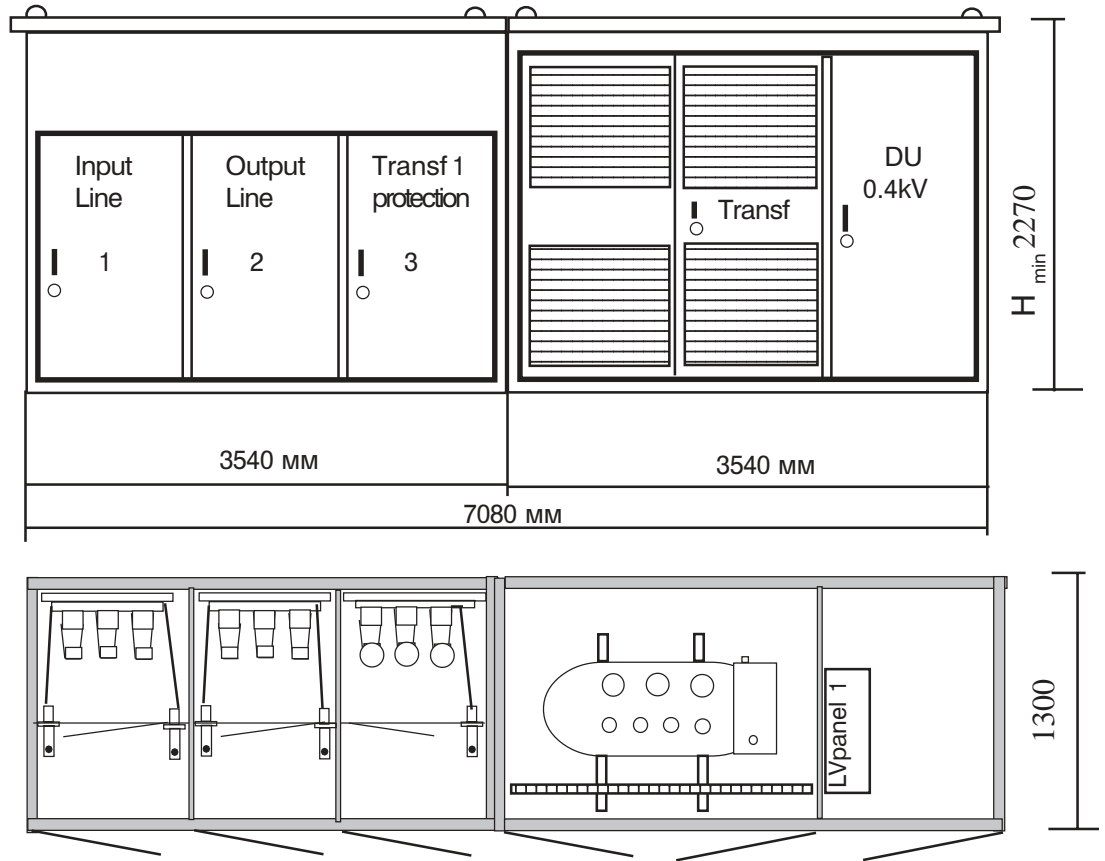
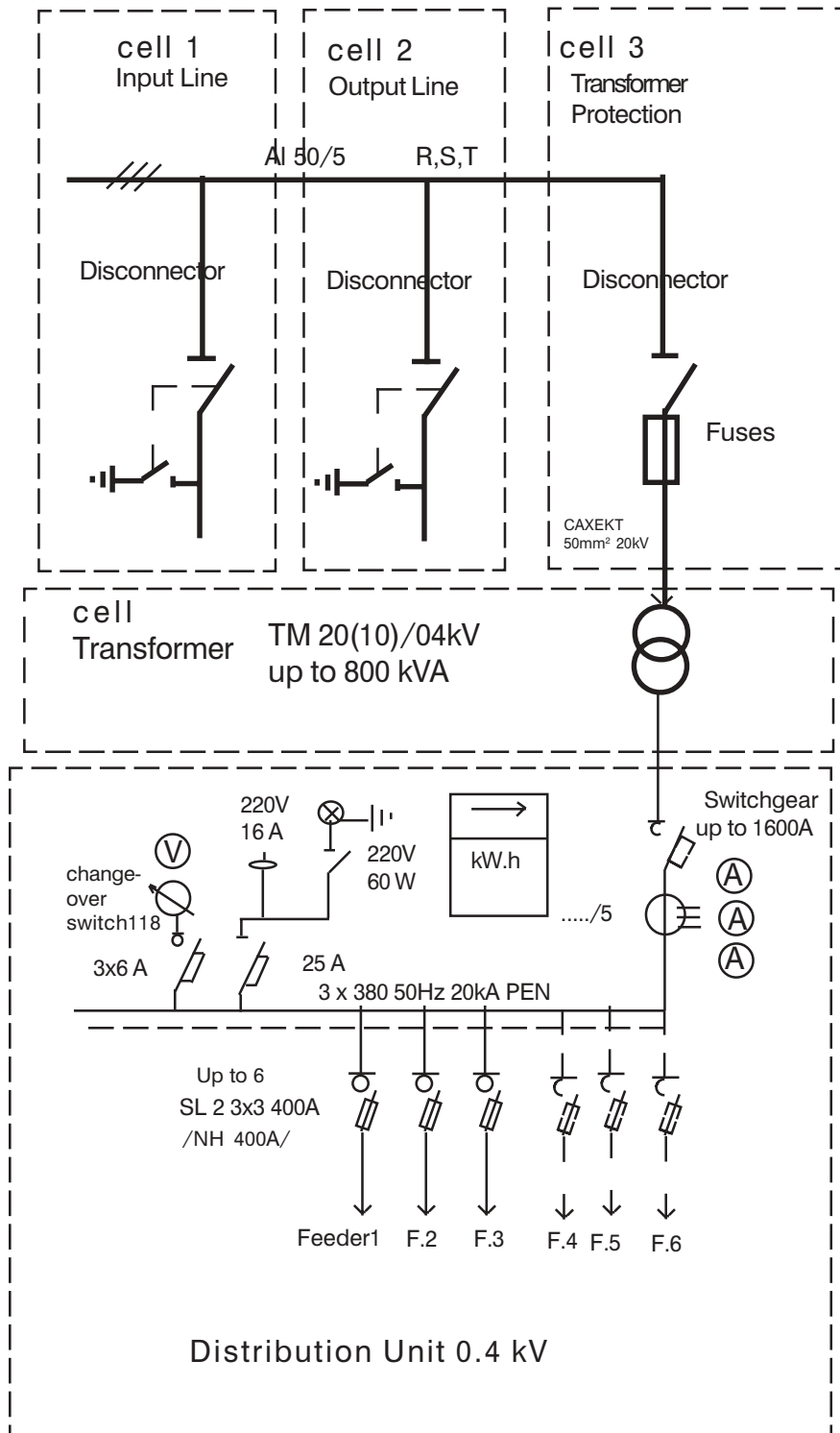


Transformer Substation P EO 20(10) /0.4kV up to 800kVA
General View

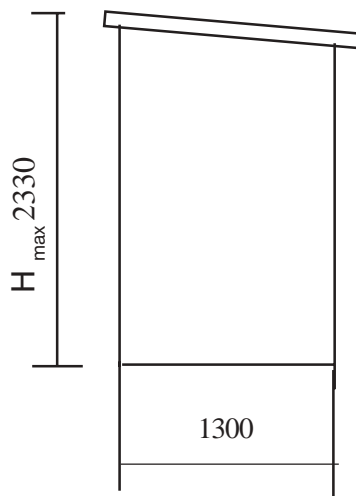
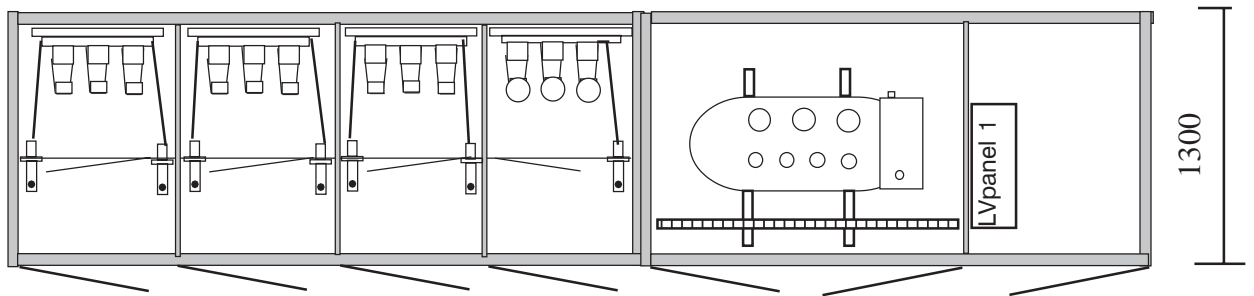
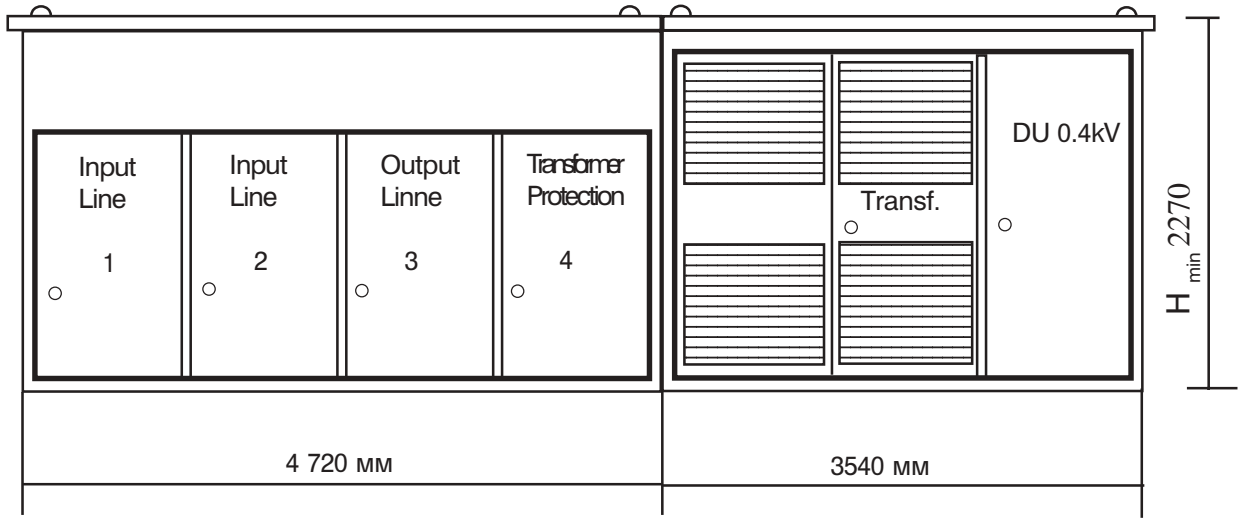


- 1. Transformer Section
Power Oil Transformer
TM 20(10)/0,4kV- up to 800kVA
- 2. LV panel - 0,4/0,231kV
- 3. MV Section
Disconnector with fuses

Area- 9,21 sq.m.



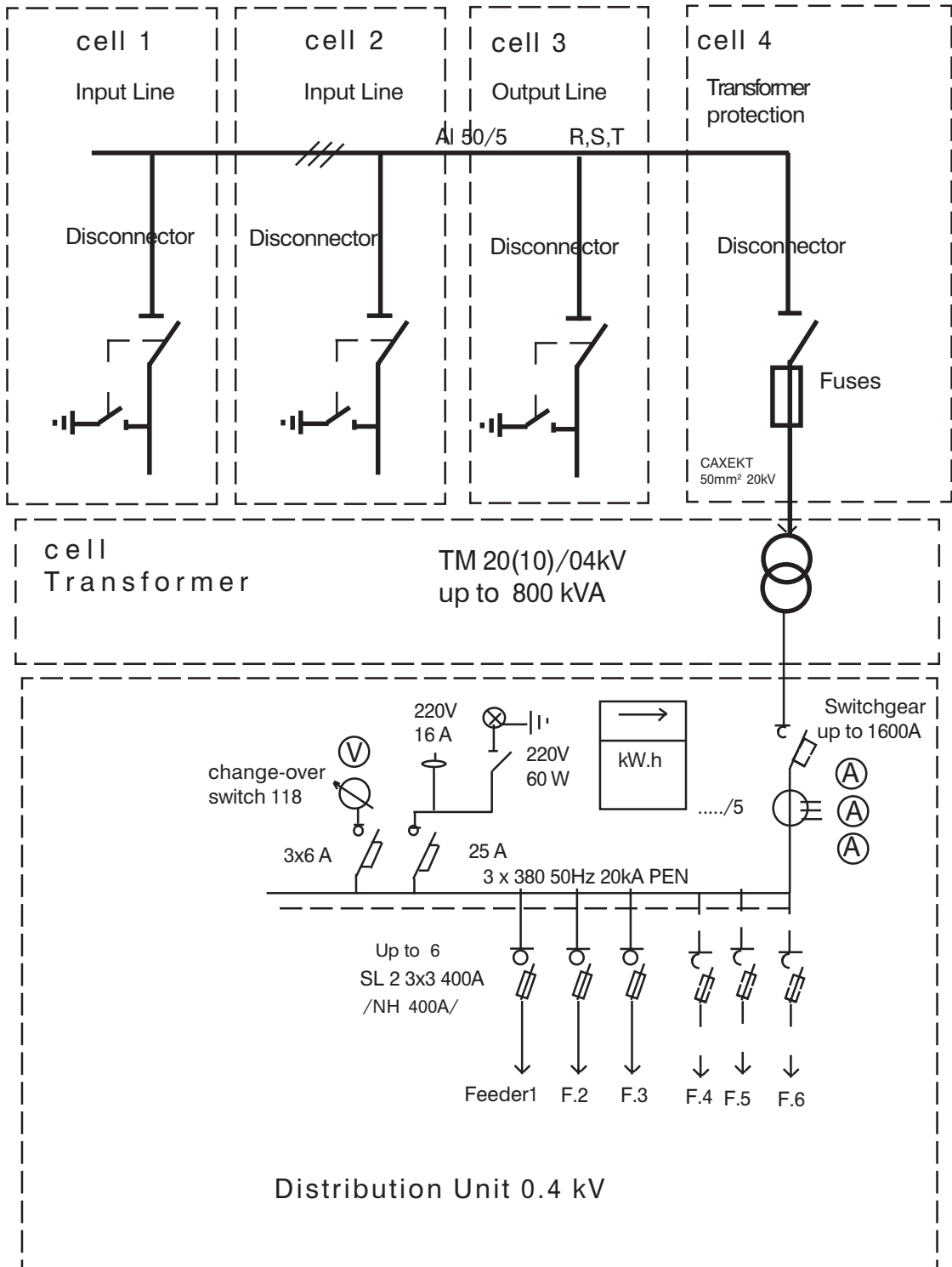
Transformer Substation P EO4 20 /0.4kV up to 800 kVA
General View



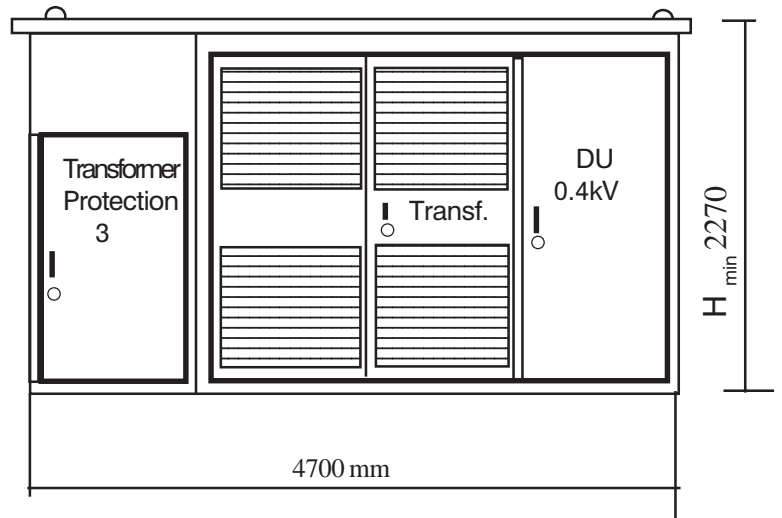
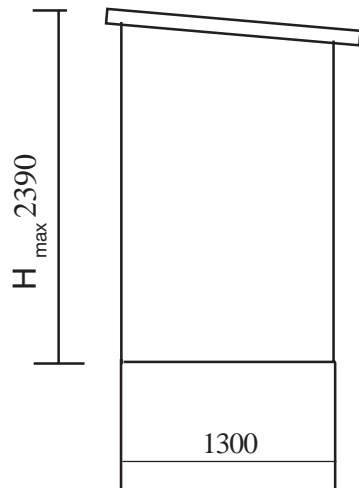
- 1. Transformer Section
Power Oil Transformer
TM 20(10)/0,4kV- up to 800kVA
- 2. LV panel - 0,4/0,231kV
- 3. MV section
disconnection with fuses

Area - 10,74 sq.m.

Transformer Substation P EO4 20 (10)/0.4kV up to 800 kVA

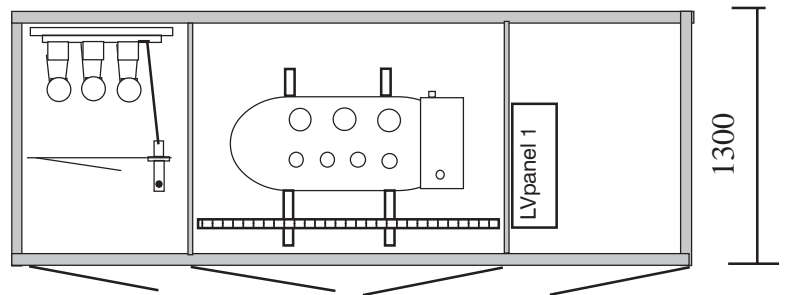


Transformer Substation - P- EO- k 10,20 /0.4kV up to 800kVA

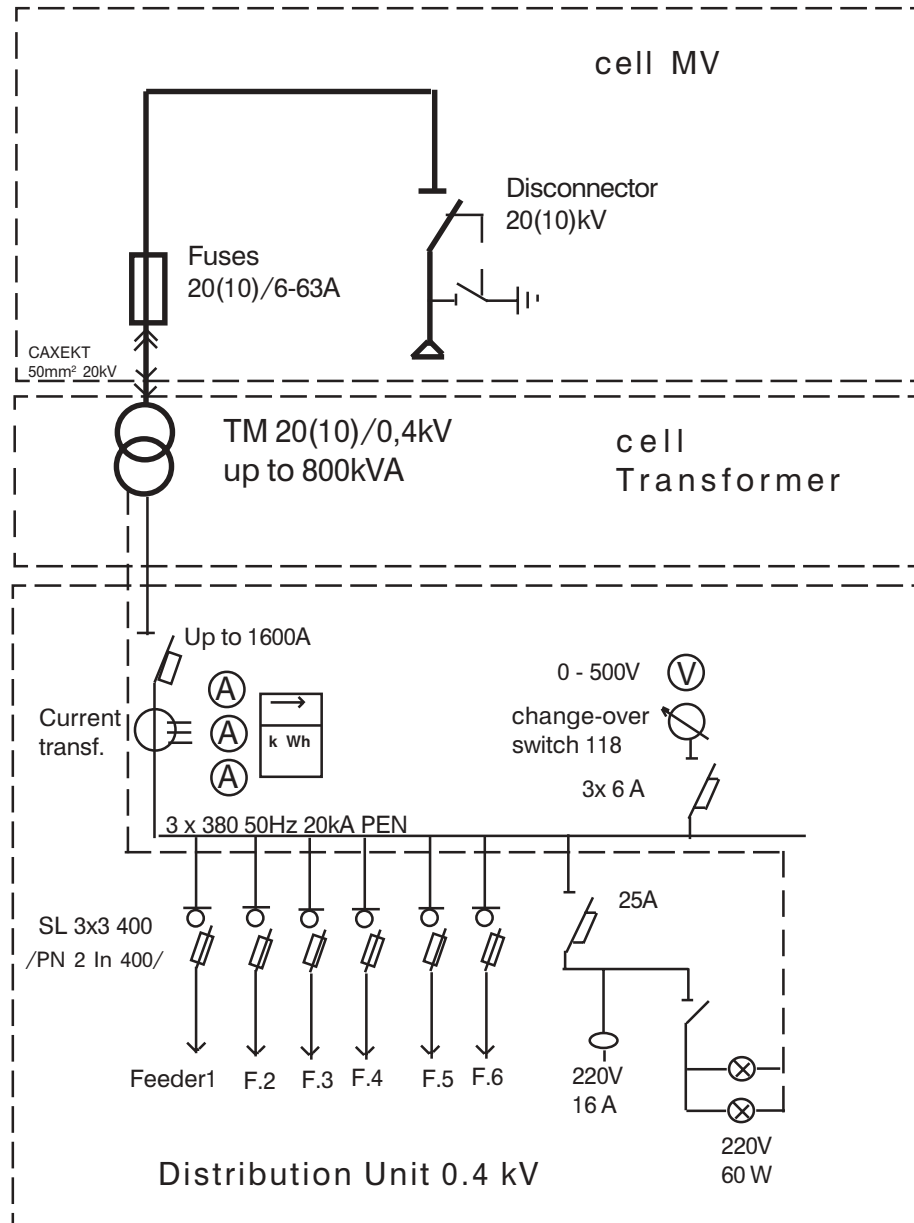


- 1. Transformer Section
Power Oil Transformer
TM 20(10)/0,4kV- up to 800kVA
- 2. LV panel - 0,4/0,231kV
- 3. MV Section
Disconnectors with fuses

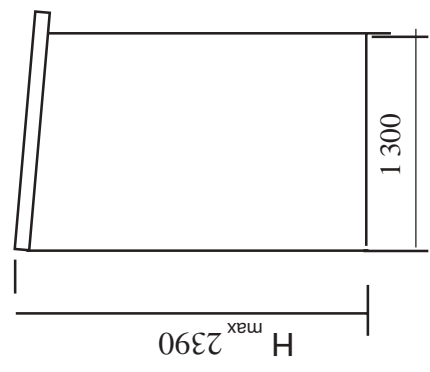
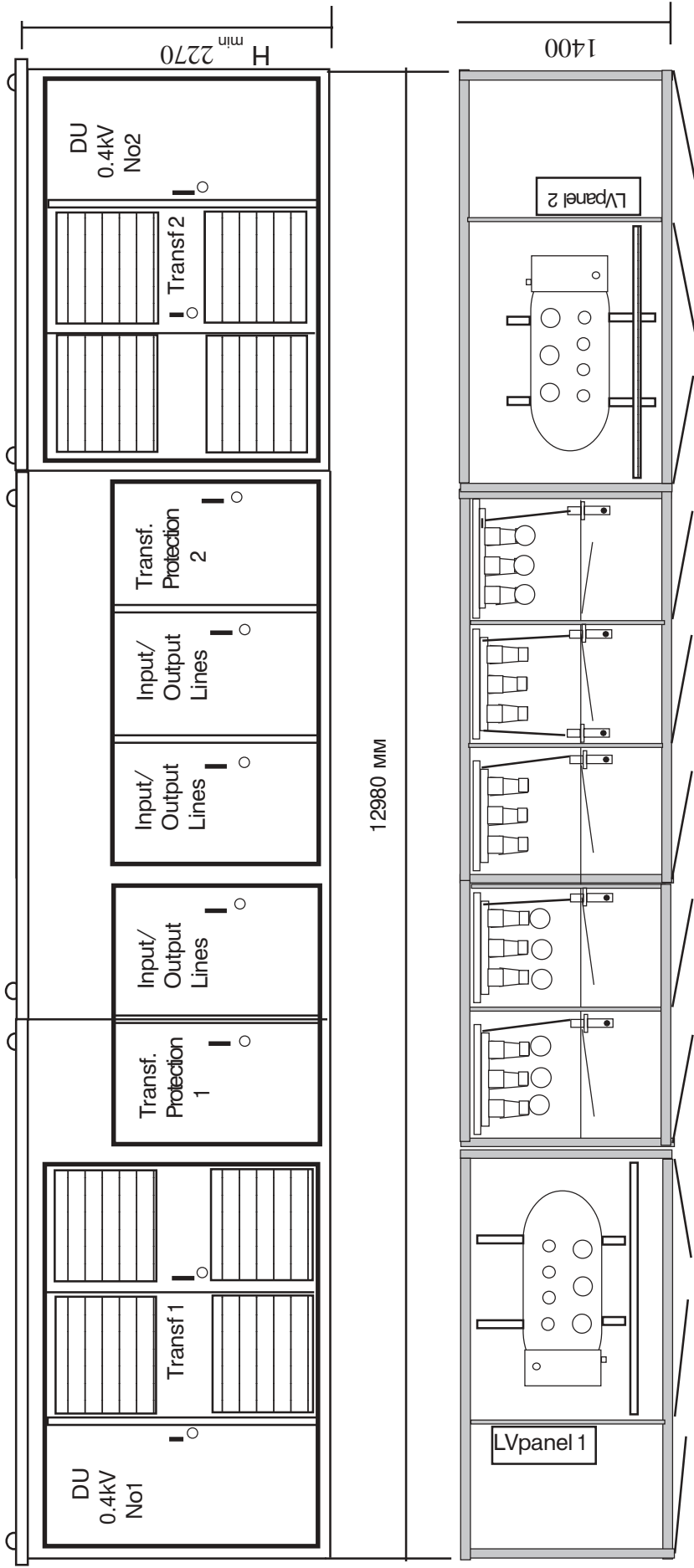
Area- 6.11 sq.m.



Transformer Substation - P- EO- k 20(10) /0.4kV up to 800kVA



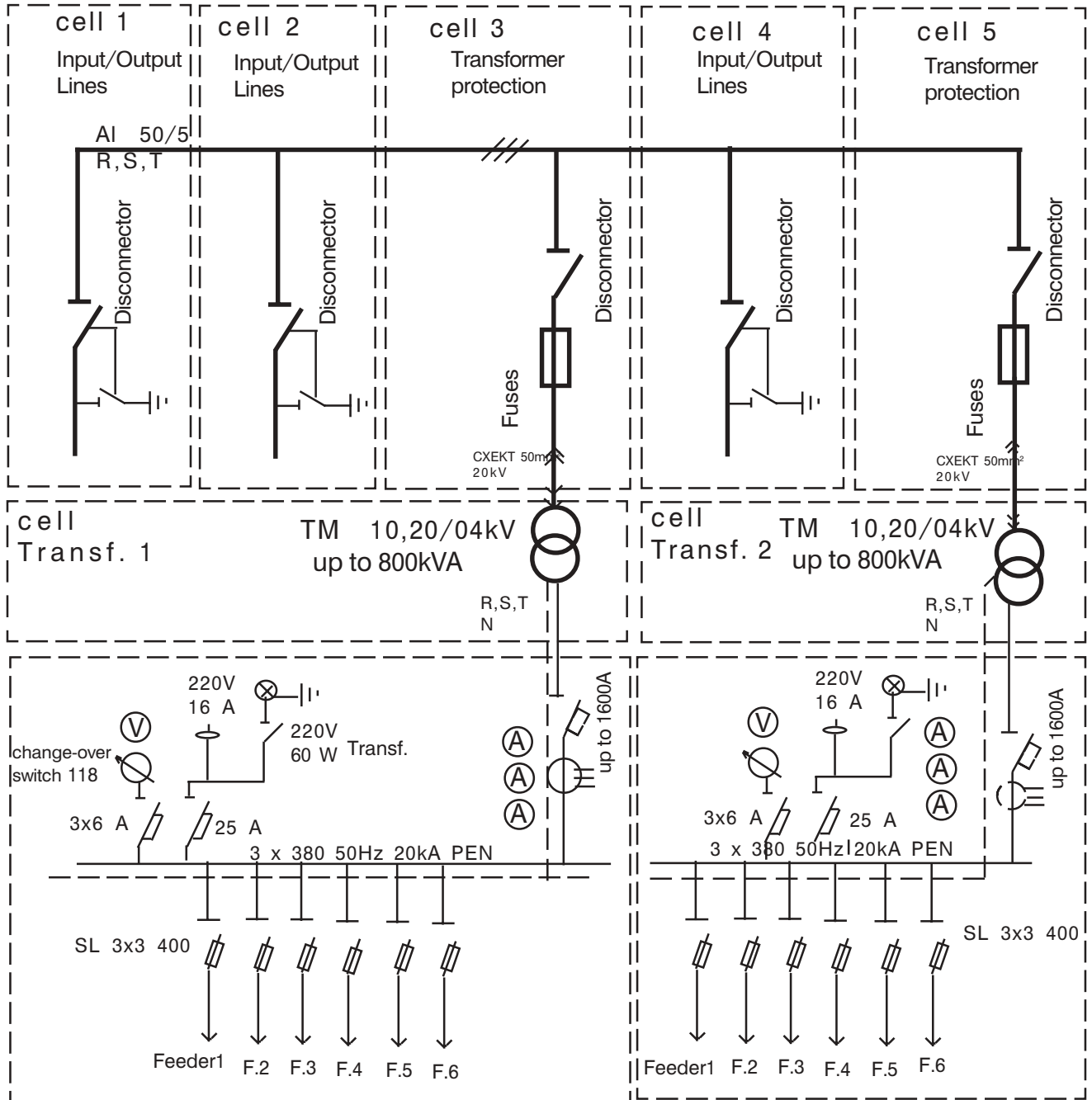
Transformer Substation-P-EO-2T-5 10,20/0.4kV up to 2x800kV



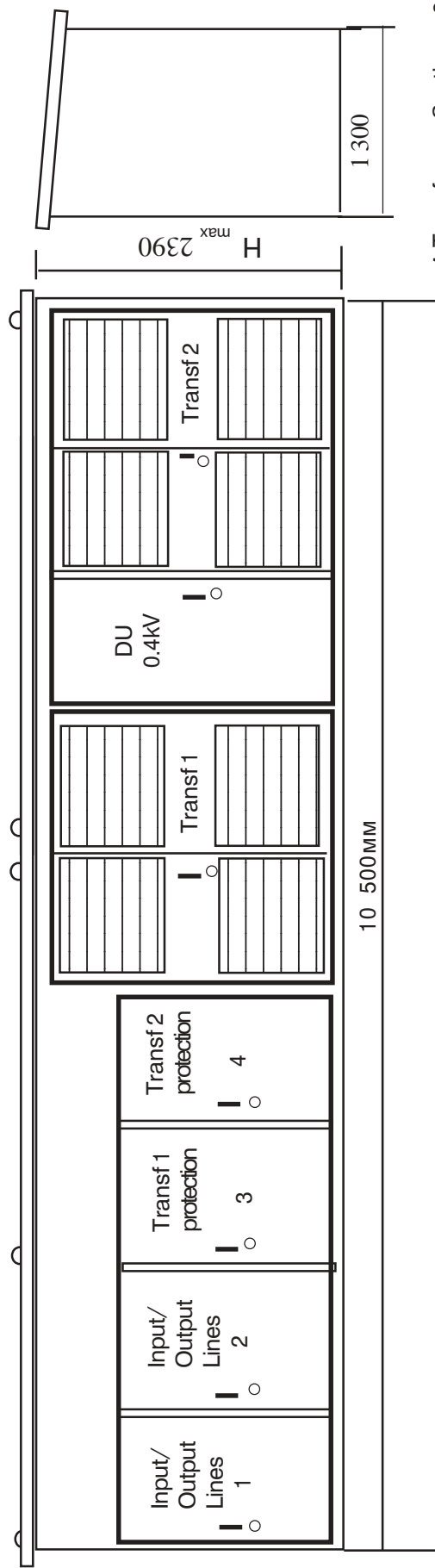
- 1. Transformer Sections -2
Power Oil Transformer
TM 10,20/0,4kV- up to 800kVA
- 2. LV Sections - 0,4/0,231kV - 2pcs
- 3. MV Section - 10,20kV 400A 16kA
 - Disconnectors
 - Input/Output Lines - 3 pcs.
 - Transformer protection - 2pcs.

Area- 16.87 sq.m.

Transformer Substation- P-EO-2T-5 10,20/0.4kV up to 2x 800kVA



Transformer Substation -P-EO-2T- 4 10,20/0.4kV up to 2x800kVA



1. Transformer Sections - 2

Power Oil Transformer

TM 10,20/0,4kV- up to 800kVA

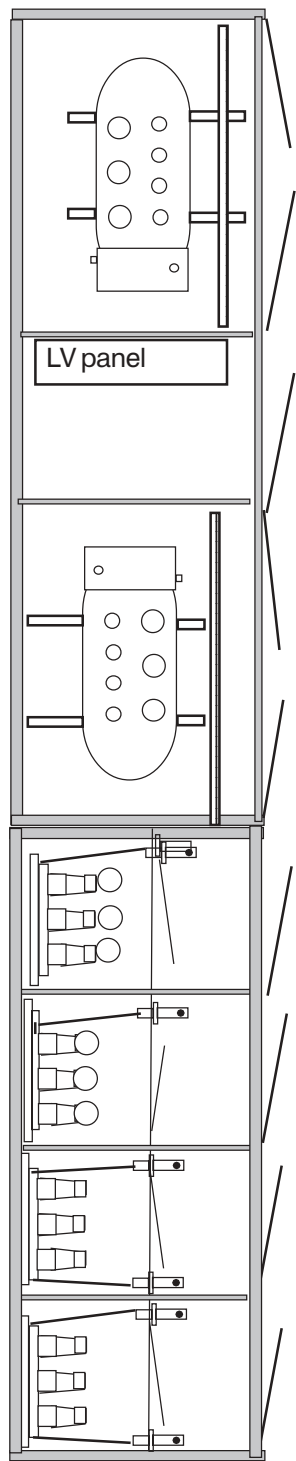
2.LV sections - 0,4/0,231kV - 2pcs

3.MV Section 10,20kV 400A 16kA

- Disconnectors

- Input/Output lines - 2

- Transformer protection - 2



Area- 13.65 sq.m.

Transformer Substation- P-EO-2T-4 10,20/0.4kV up to 2x800kVA

