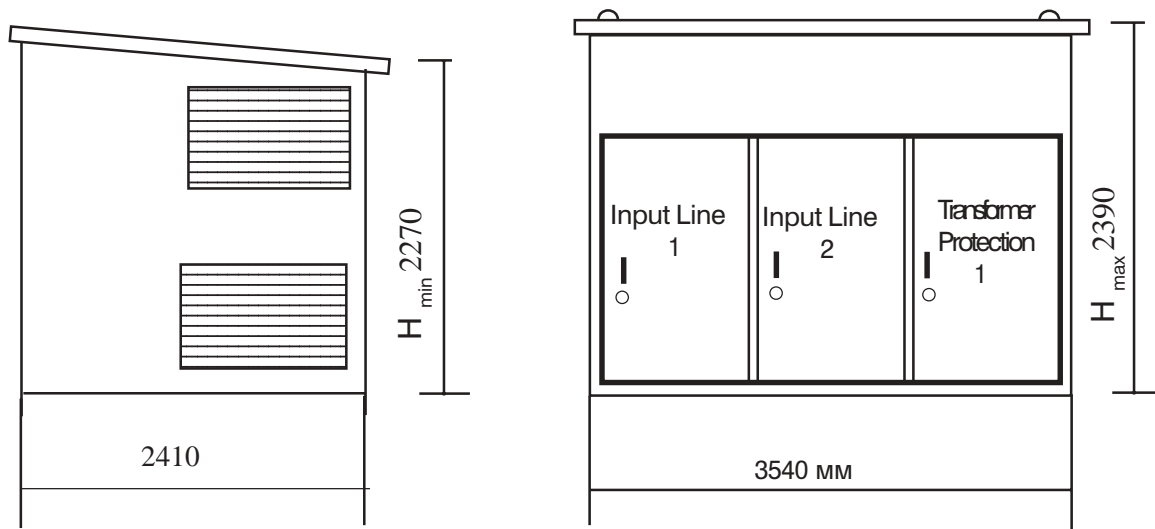
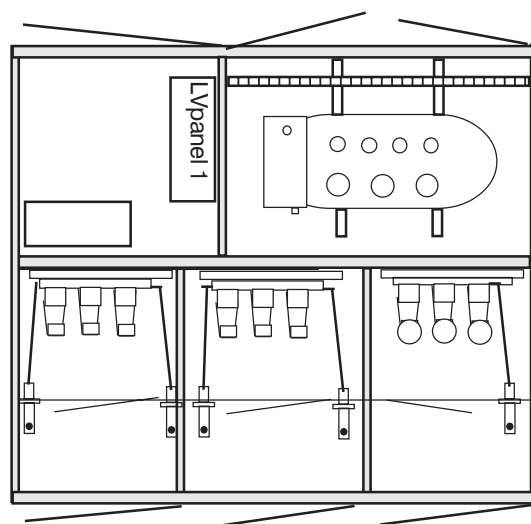


## Transformer Substation P 20kV / up to 800 kVA

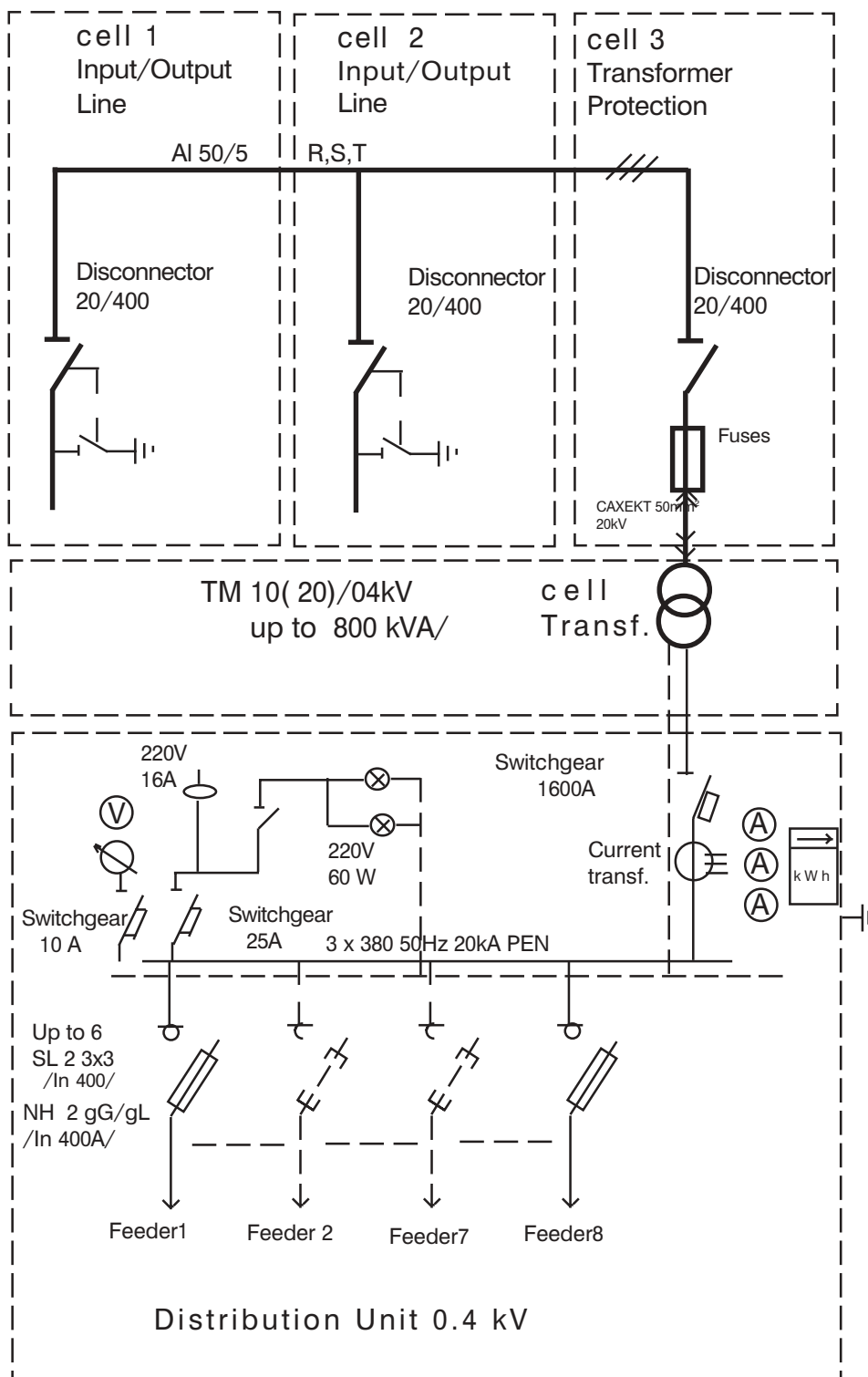


- 1. Transformer Section  
Power Oil Transformer  
TM 20(10)/0,4kV- up to 800kVA
- 2. LV panel - 0,4/0,231kV
- 3. MV Section  
Disconnectors with fuses

Area- 8,84 sq.m.

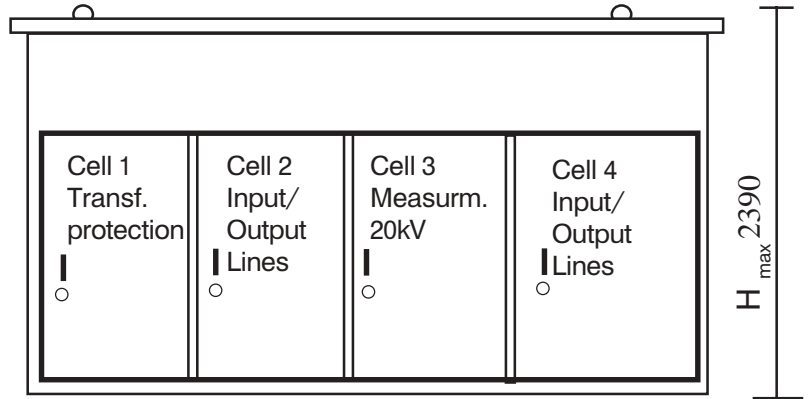


Transformer Substation P 20,10kV / up to 800 kVA  
Single Line Diagram

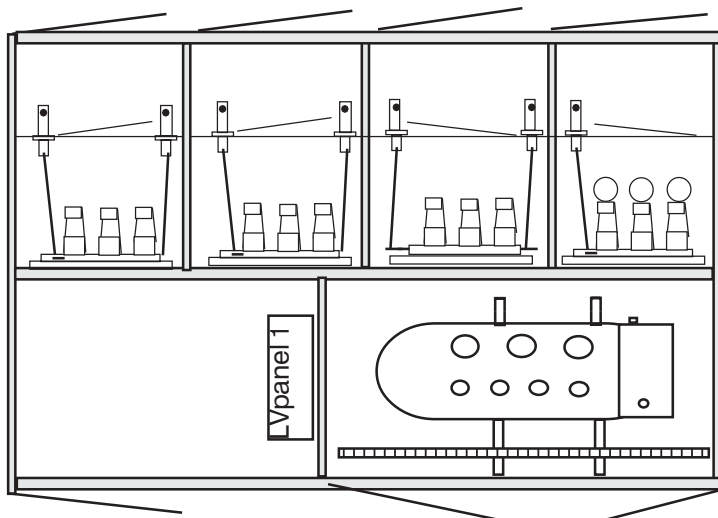
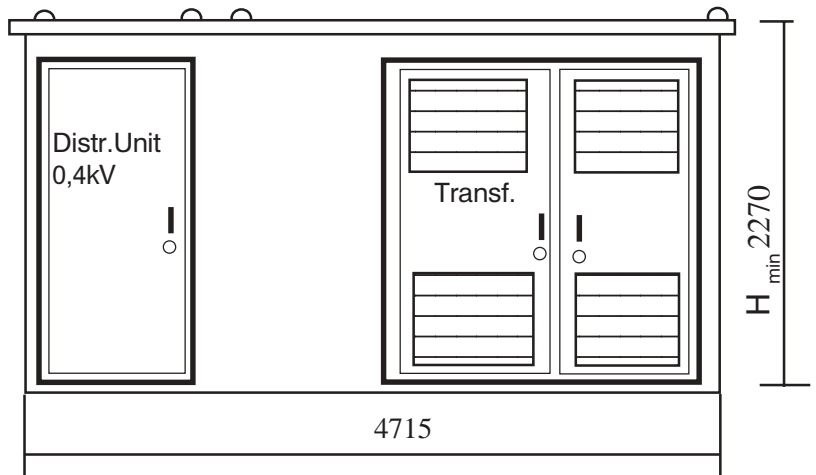
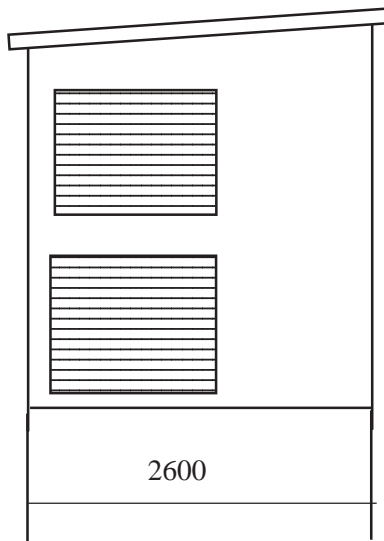


Transformer Substation P-4 20,10/0.4 kV up to 800kVA  
General View

MV Side View



Power Transformers Side View



- 1. Transformer Section  
Power Oil Transformer  
TM 20(10)/0,4kV- up to 800kVA
- 2. LV panel - 0,4/0,231kV
- 3. MV Section  
Disconnectors with fuses

Area- 8,84 sq.m.

Transformer Substation P-4 20,10kV / up to 800 kVA  
Single Line Diagram

