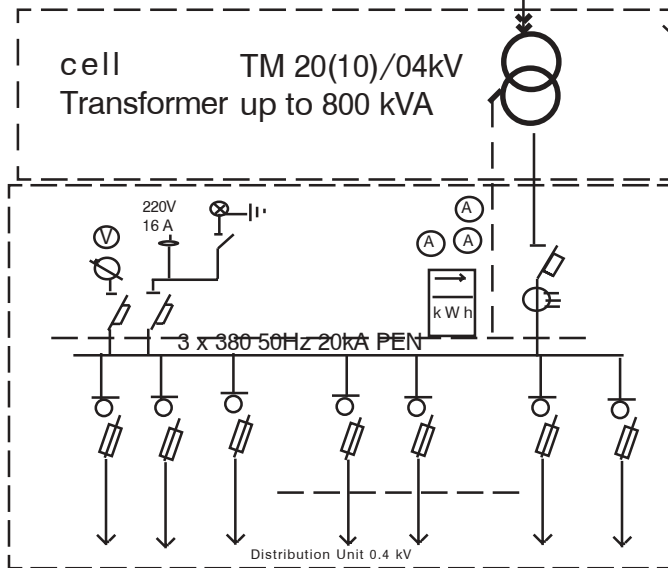
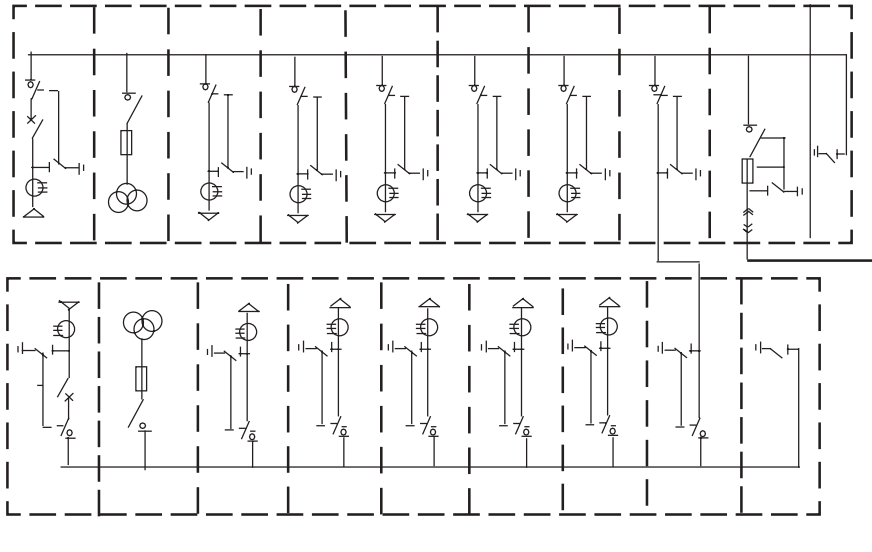
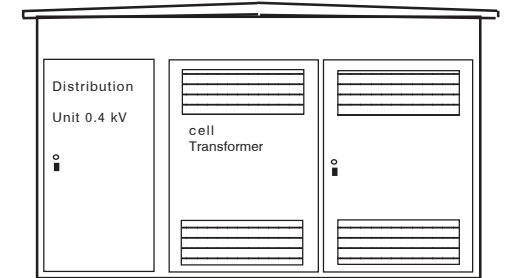
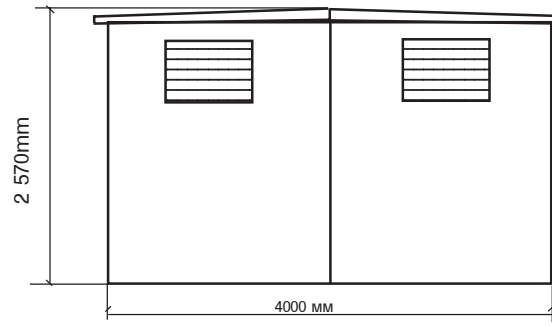
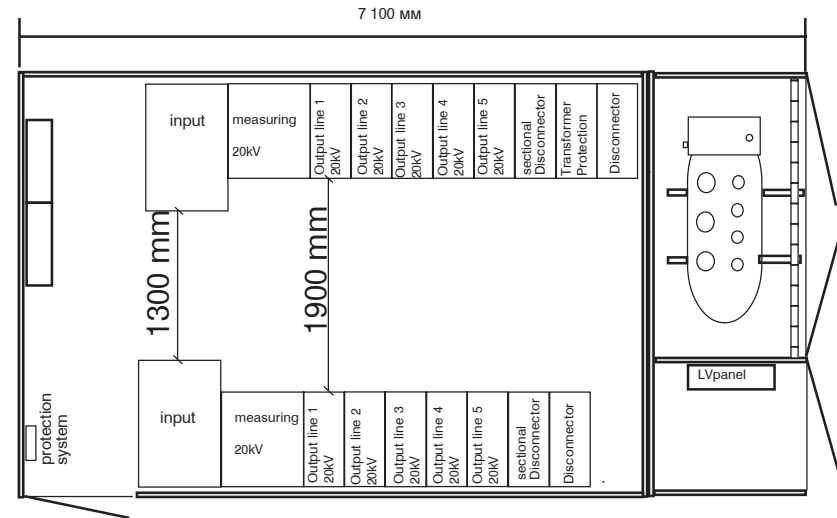


Type A

Single line diagram

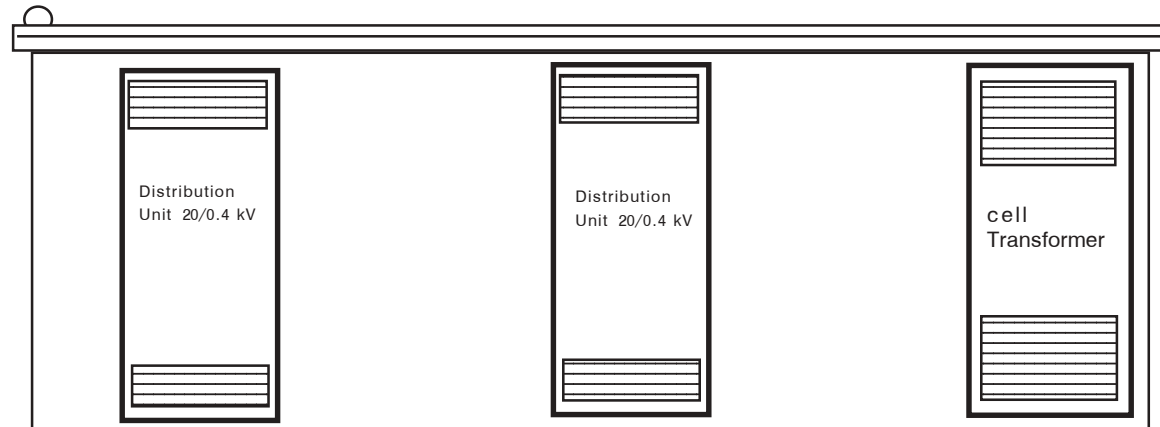
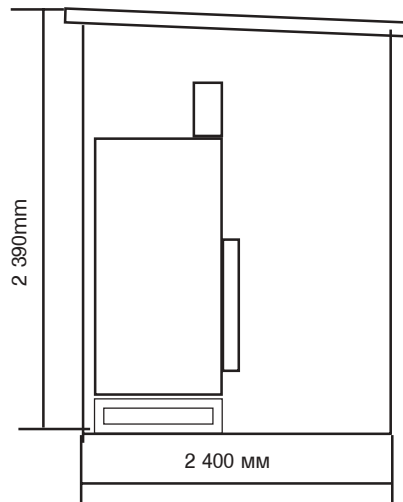
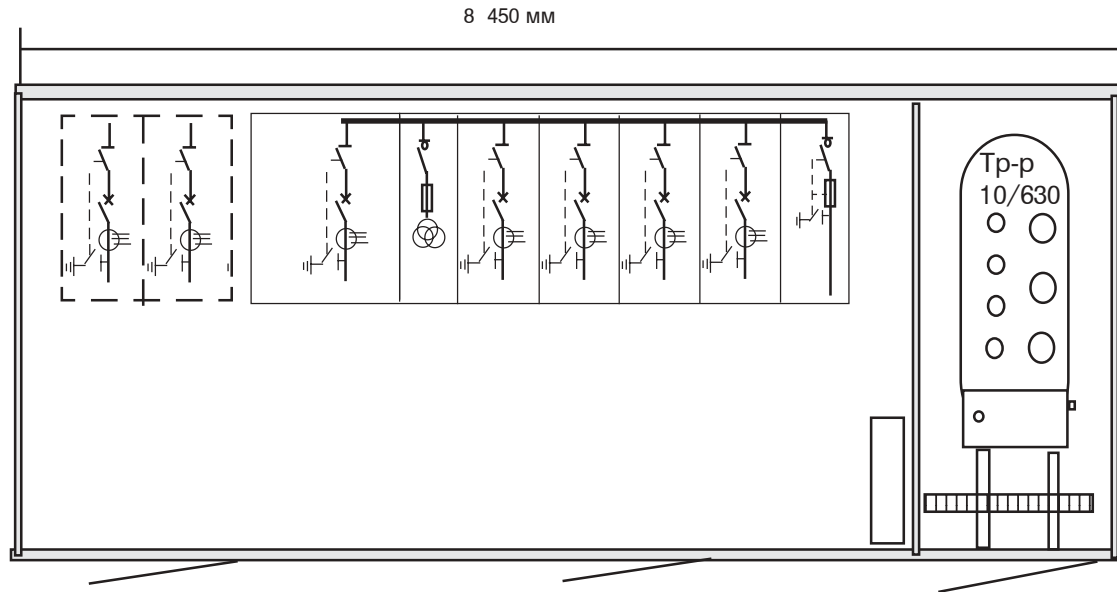


- 1. Transformer Section
Power Oil Transformer
TM 20(10)/0,4kV- up to 800kVA
 - 2. LV panel - 0,4/0,231kV
 - 3. MV Section
- Area- 28,4 sq.m.**

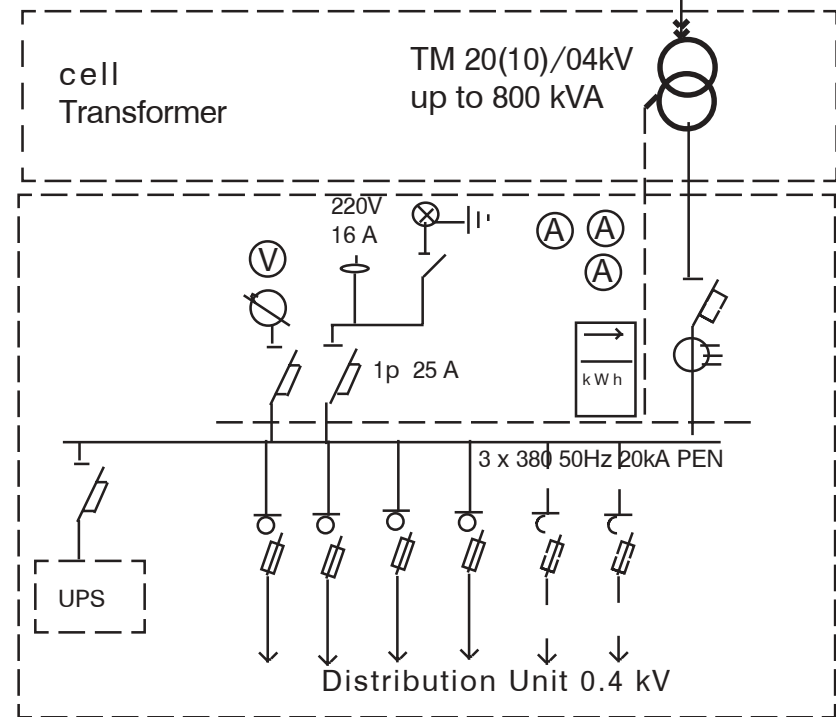
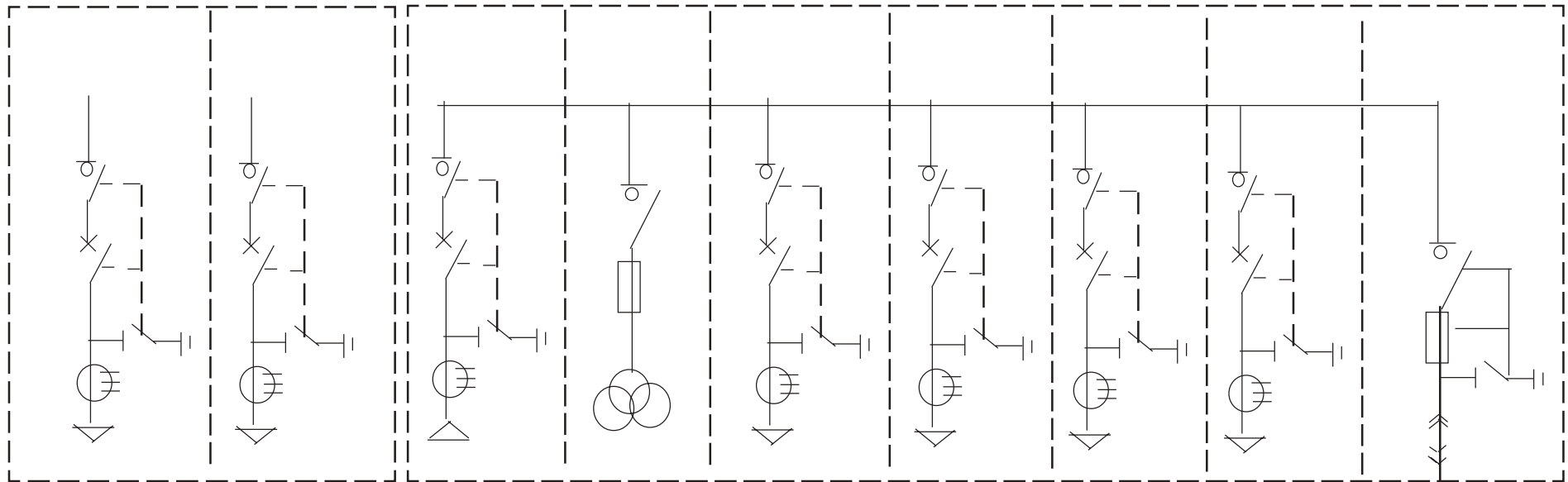


Type B

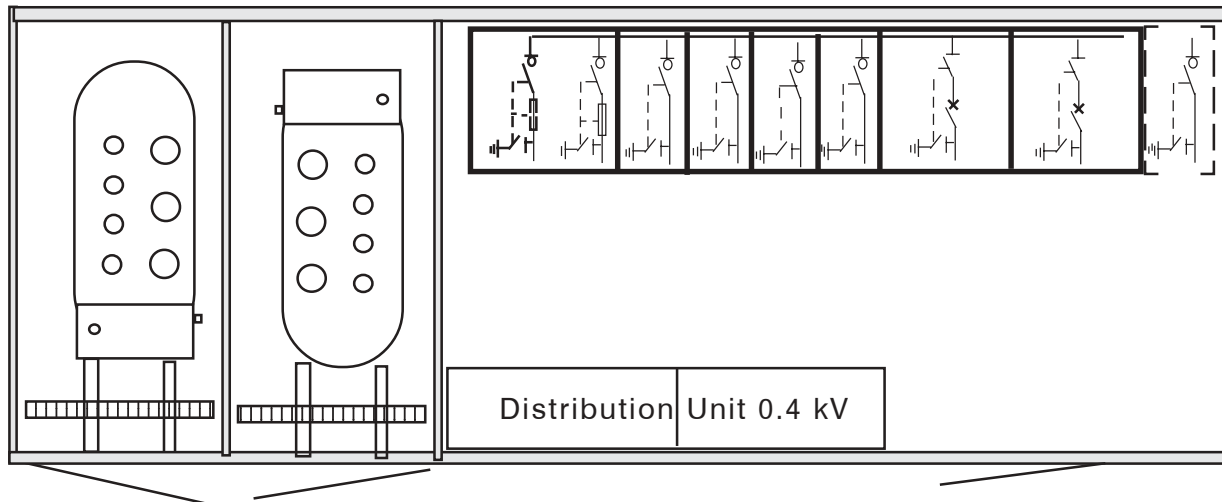
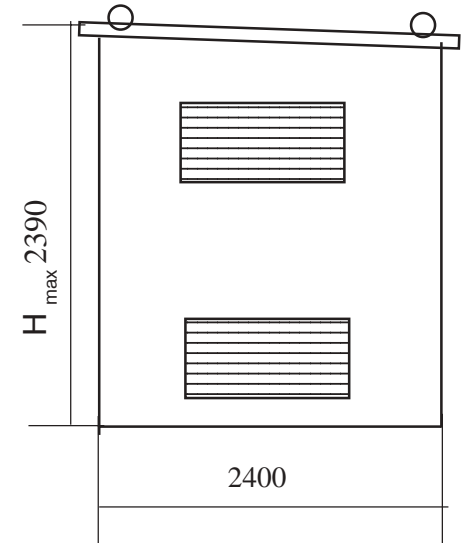
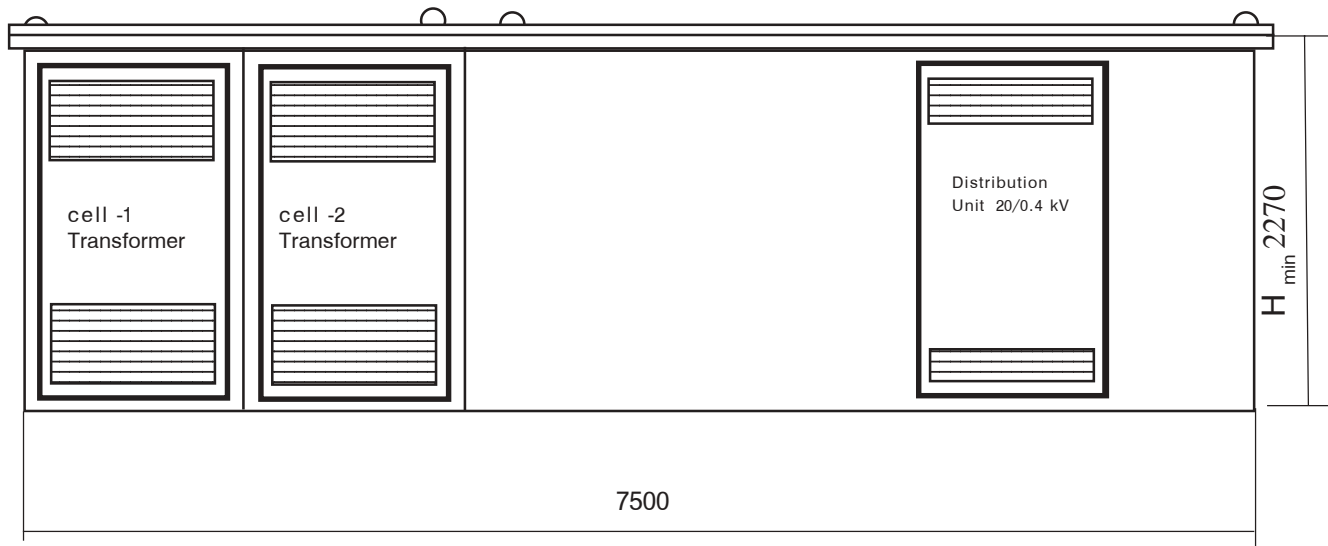
- 1. Transformer Section
Power Oil Transformer
TM 20(10)/0,4kV- up to 800kVA
 - 2. LV panel - 0,4/0,231kV
 - 3. MV Section
- Area- 21.12 sq.m.**



Single line diagram type B



Type C



- 1. Transformer Section
Power Oil Transformer
TM 20(10)/0,4kV- up to 800kVA
 - 2. LV panel - 0,4/0,231kV
 - 3. MV Section
- Area- 18,07 sq.m.**

Монтира се върху предварително подготвен фундамент

Single line diagram type C

